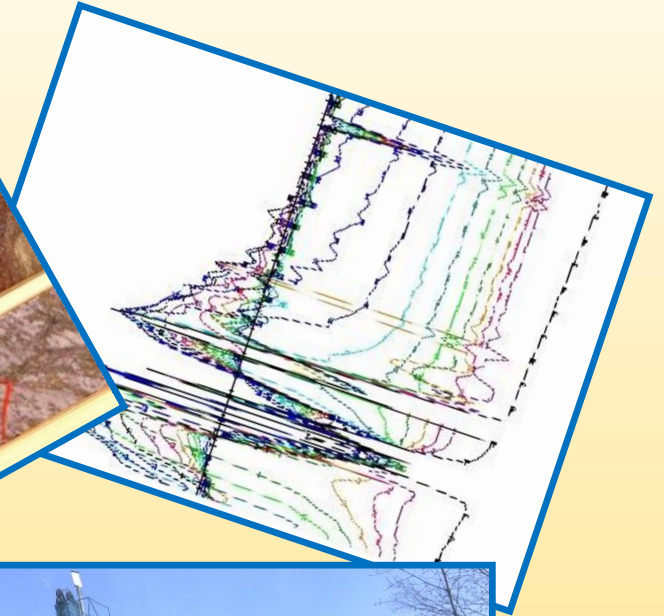
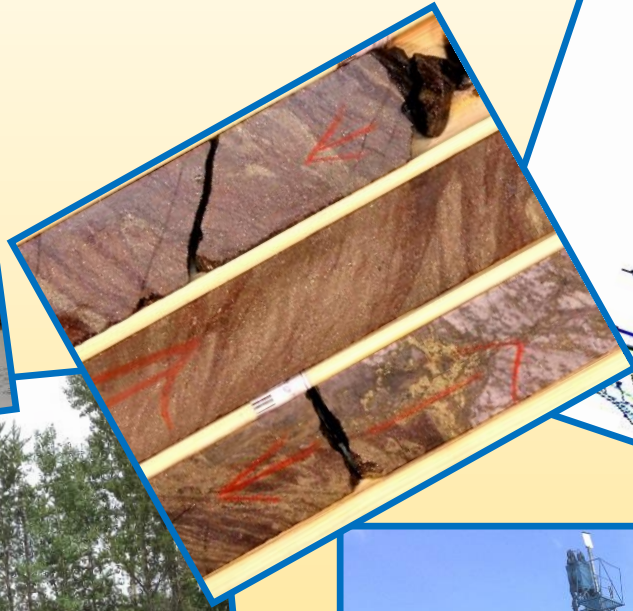
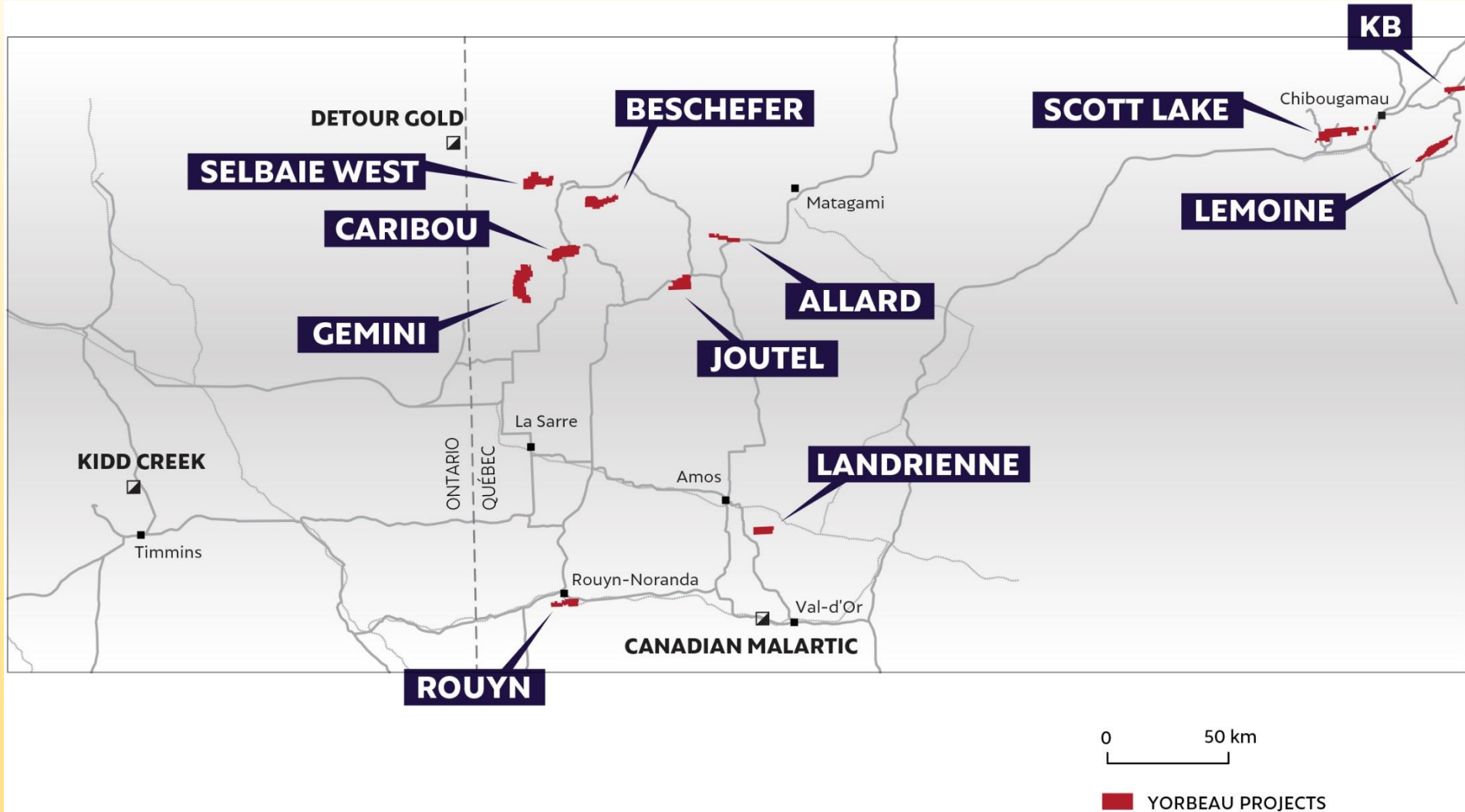


YORBEAU RESOURCES INC



december 2018

Properties in world class mining region



Four projects hosting a mineral deposit !

1. Rouyn

- Project optioned to IAMGOLD
- Resources of 500,000 ounces of gold (NI 43-101)
- Potential of more than 2 million ounces

2. Scott Lake

- Resources of 17,8 millions tonnes (NI 43-101)

3. Joutel (Explo Zinc)

- Resources of 861,000 tonnes (NI 43-101)

4. Caribou

- High grades Cu- Zn- Au- Ag
- Potential drilled : 1.5 million tonnes, open at depth

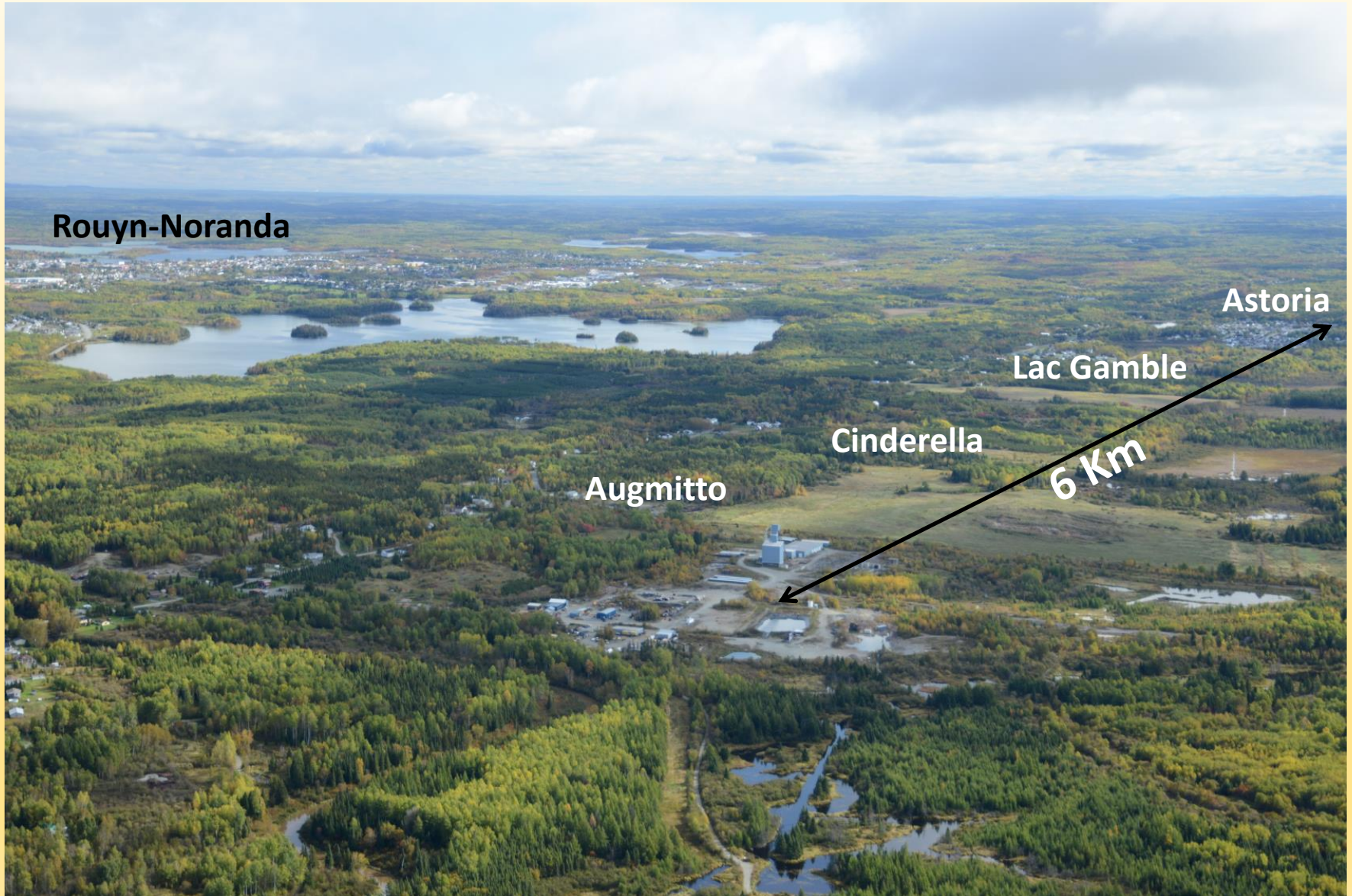
...the only junior owning 4 mineral deposits in Québec...

ROUYN PROJECT ON CADILLAC BREAK, Rouyn-Noranda



Infrastructures Augmitto

Rouyn property (view northeast)



Rouyn-Noranda

Astoria

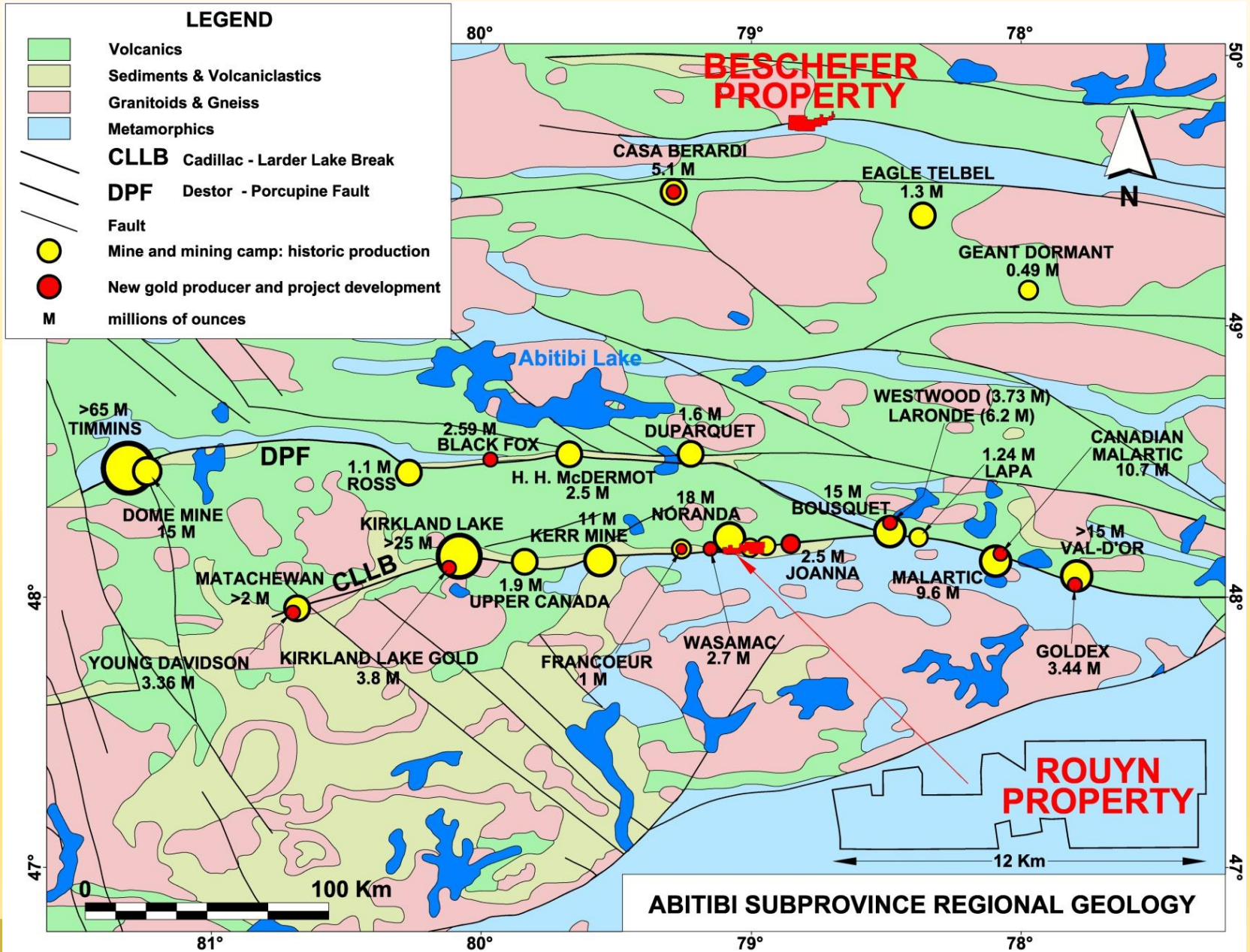
Lac Gamble

Cinderella

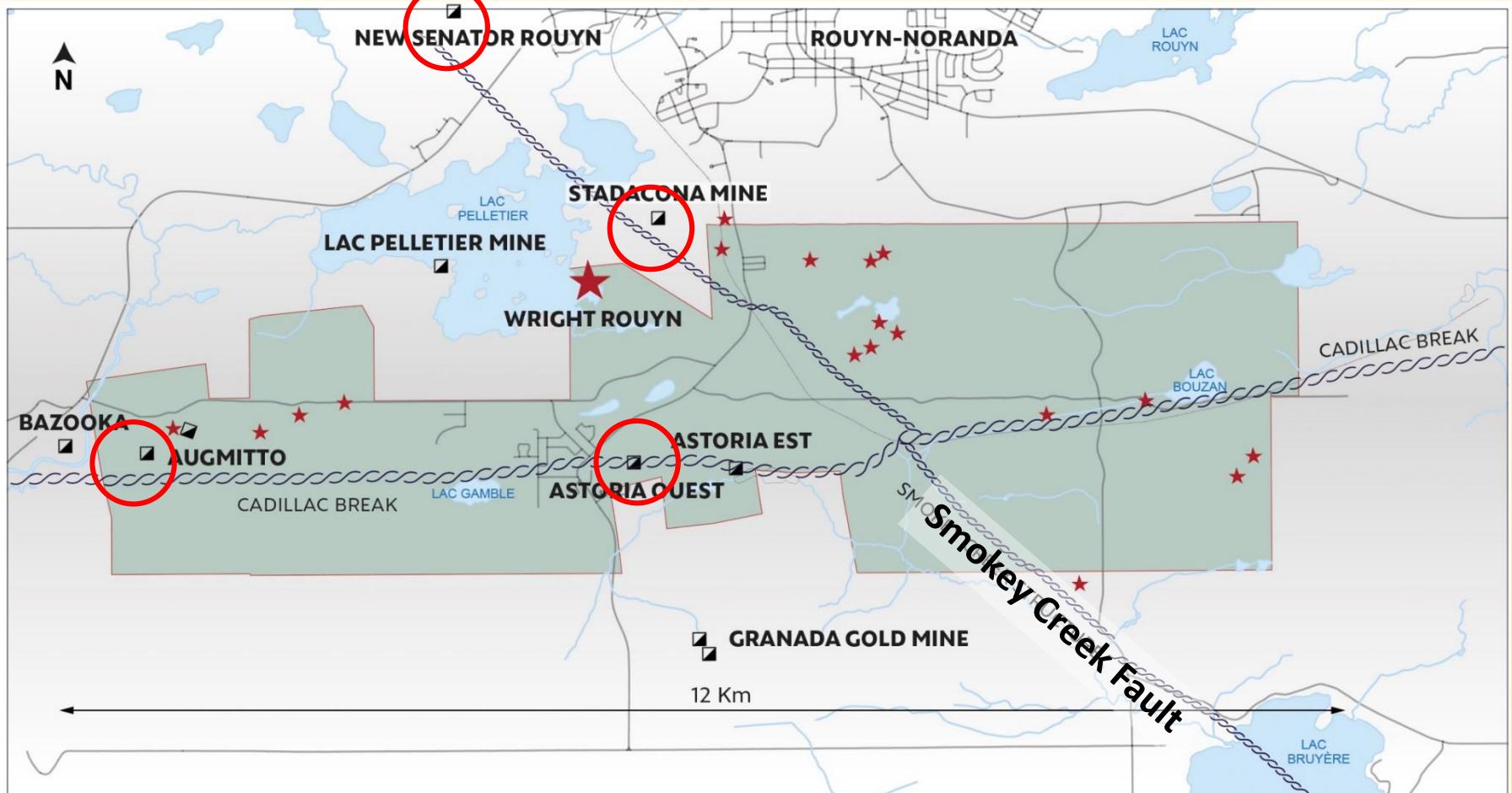
Augmitto

6 Km

Regional Geology & Historic Production



Rouyn Property map



- 12 km segment of Cadillac Break
- Proximity of past gold producers

0 2 km

★ GOLD SHOWING

Rouyn Project: Agreement with IAMGOLD

1. **Cash payment to Yorbeau of C\$1 million on signing**
2. **Additional cash payments totalling C\$3 million from year 2 to year 4**
3. **Expenditures of C\$9 million over 4 years**
 - Includes 20,000 m of diamond drilling within first 2 years
4. **Resource estimate done with parameters agreed upon between Yorbeau and IMG**
5. **Purchase of property for C\$15 per ounce of gold in resource estimate, capped at \$C30 million**
6. **Production royalty of 2% NSR (with potential buy-back by IMG of 1% NSR for \$C2.5 million within 2 years of exercising option)**

Resources (NI 43-101 compliant) 2011

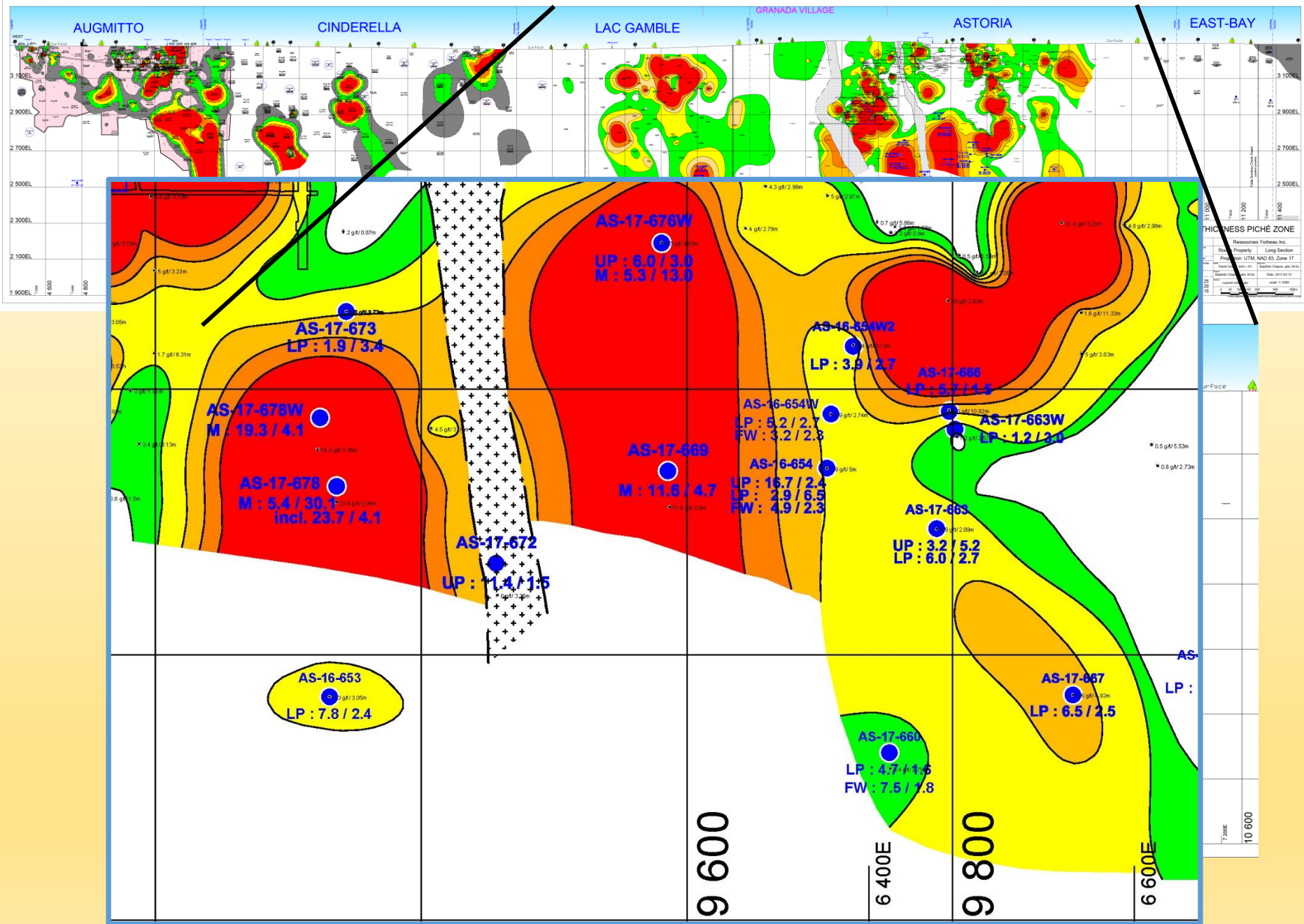
TOTAL (oz)

M&I: 286,214

Inf. : 211,536

	BLOCK					
NI-43-101 Resource Estimate	ASTORIA			AUGMITTO		
Year	2005			2011		
Authors	P & E Mining Consultants Inc.			Roscoe Postle Associates Inc.		
Cut-off	3.0 g/t Au			3.4 g/t Au		
Category	Tonnes*	Au (g/t)	Au (oz)	Tonnes	Au (g/t)	Au (oz)
Measured	5 111	4.8	781	38 000	6.8	8 400
Indicated	1 424 453	5.2	237 233	209 000	5.9	39 800
Measured + Indicated	1 429 564	5.2	238 014	247 000	6.1	48 200
Inferred	302 597	5.4	52 536	633 000	7.8	159 000
* underground resources only						

Does not include drilling at Cinderella, Lac Gamble, 2017 drilling



Estimate of « Potential » for Astoria + Lac Gamble (summary)

Potential* (cut-off: 3.4 g/t Au) maximum hole influence of 40m			
	tonnes	grade (g/t Au)	ounces of gold
Lac Gamble	1.0-1.4 Mt	7.2-8.8	0.3-0.4 Moz
Astoria	2.9-3.6 Mt	6.1-7.4	0.6-0.9 Moz
Total Gamble + Astoria	4.1 – 5.0 Mt	6.4 – 7.8	0.8 – 1.3 Moz

* **Subject to additional drilling** in some sectors where drill spacing may be too large

Not « *Mineral Resources* » - re: NI 43-101

- Not by Independent Person
- Not accompanied by « ***Technical Report*** »

Estimate of « Potential » for Astoria + Lac Gamble (summary)

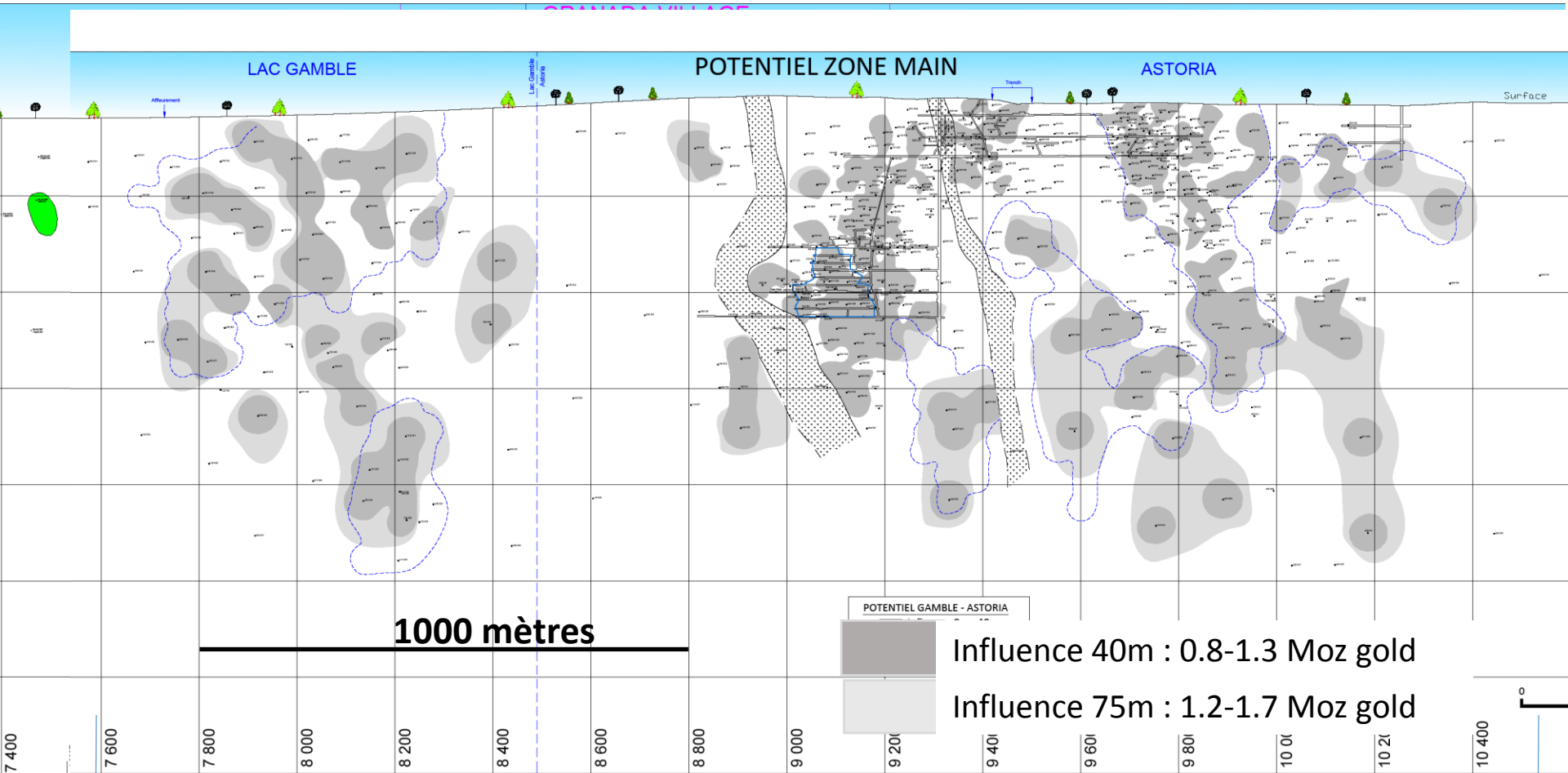
Potential* (cut-off: 3.4 g/t Au) maximum hole influence of 75m			
	tonnes	grade (g/t Au)	Ounces of gold
Lac Gamble	1.7-2.0 Mt	7.7-8.5	0.4-0.6
Astoria	4.0-5.0 Mt	6.6-7.4	0.9-1.2
Total Gamble + Astoria	6.0 – 7.0Mt	6.3 – 7.7	1.2 – 1.7 Moz

* **Subject to additional drilling** in some sectors where drill spacing may be too large

Not « *Mineral Resources* » - re: NI 43-101

- Not by Independent Person
- Not accompanied by « ***Technical Report*** »

Potential as a function of drill hole influence (40m and 75m)



After more than a century of production, the Cadillac Break continues to deliver gold!

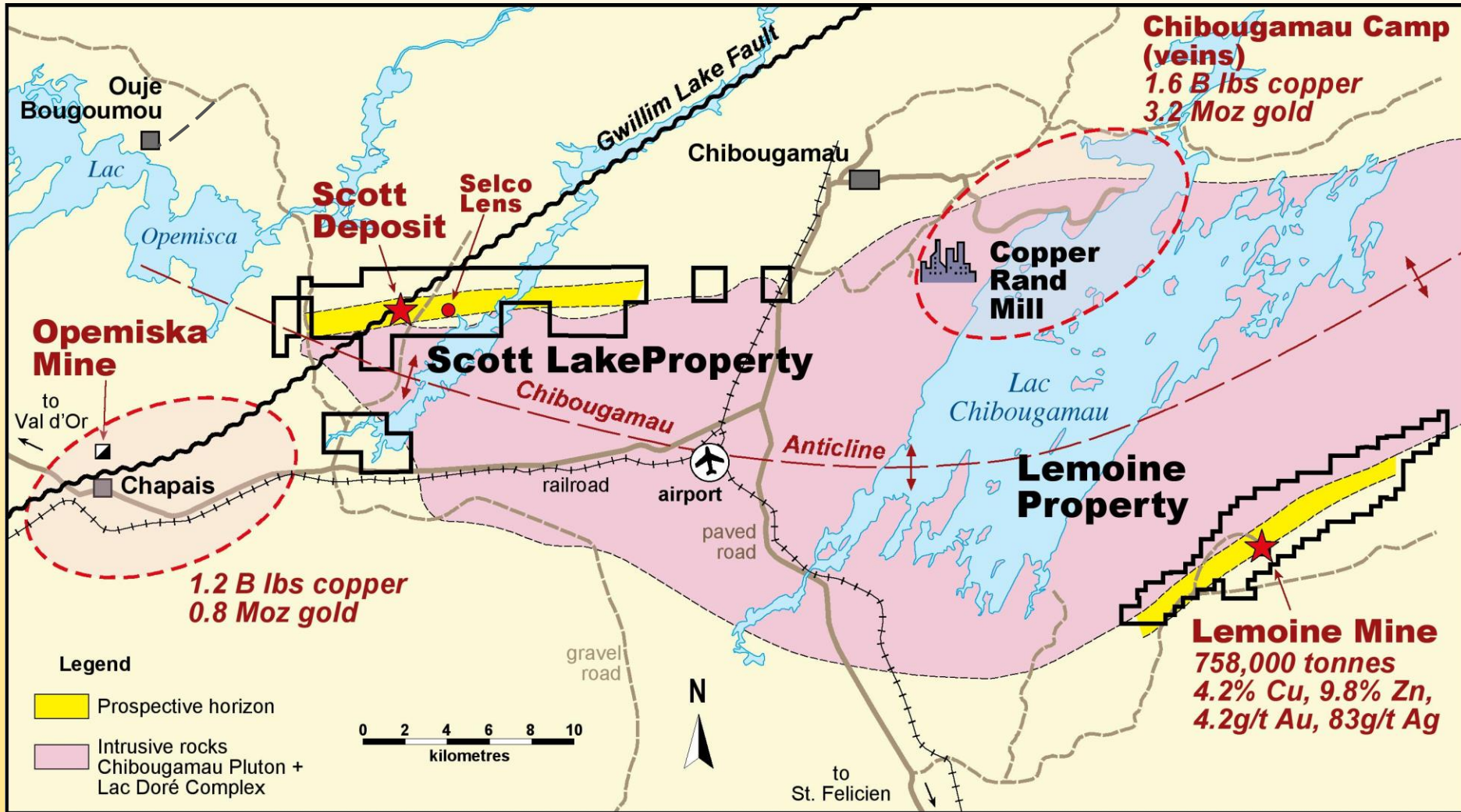
- Over 24,000 metres drilled by Kinross in 2017
- « Potential » up to 1.7 Moz Au for Gamble and Astoria
- Resources of 48,200 oz (M+Ind) plus 159,000 (Inf.) at Augmitto
- Agreement with IAMGOLD (producer with operating mill 40 km from project)



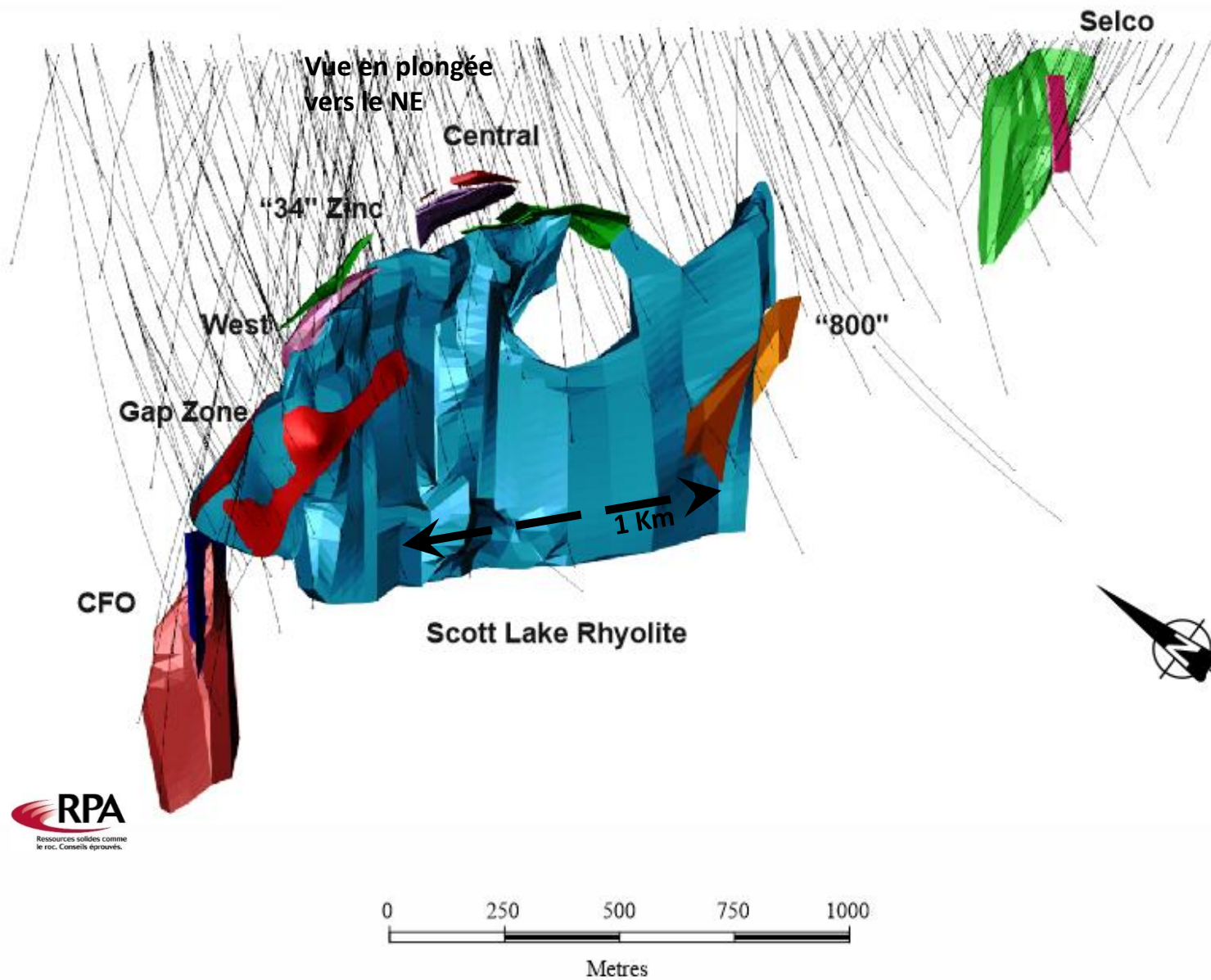
Scott Project – looking North-West



CHIBOUGAMAU MINING CAMP



3D Isometric View of Scott Lake Wireframes Looking Northeast



Mineral Resources * - Scott

Category	Tonnes	%Cu	%Zn	g/t Au	g/t Ag
Indicated	3,567,000	0.95	4.17	0.2	37
Inferred	14,281,000	0.78	3.49	0.2	22
Total	17,847,000	0.8	3.6	0.2	25

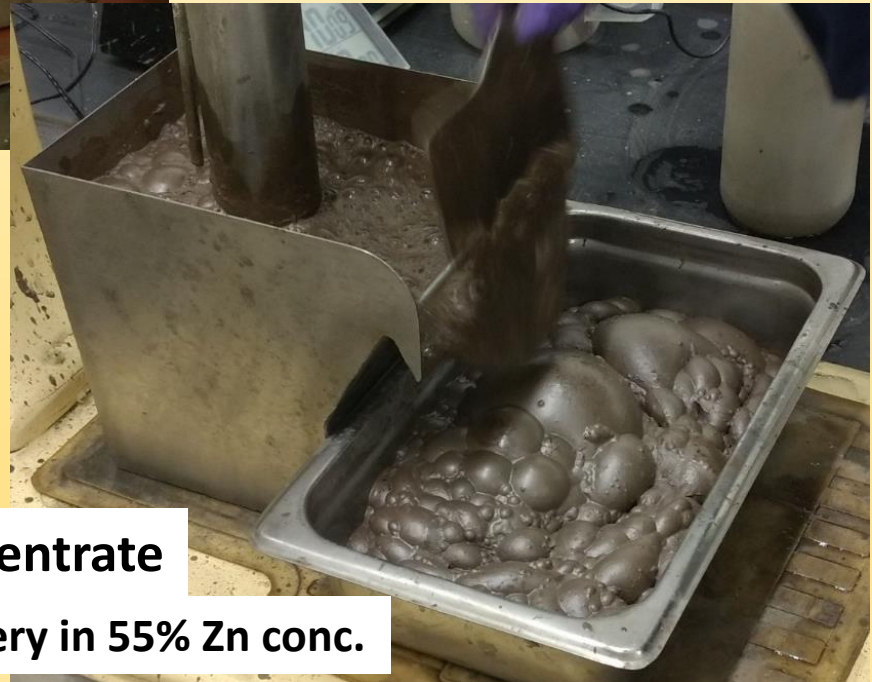
* 2017, in accordance with NI 43-101 *Technical Report*



**Metallurgical tests
completed in 2017**

Copper concentrate

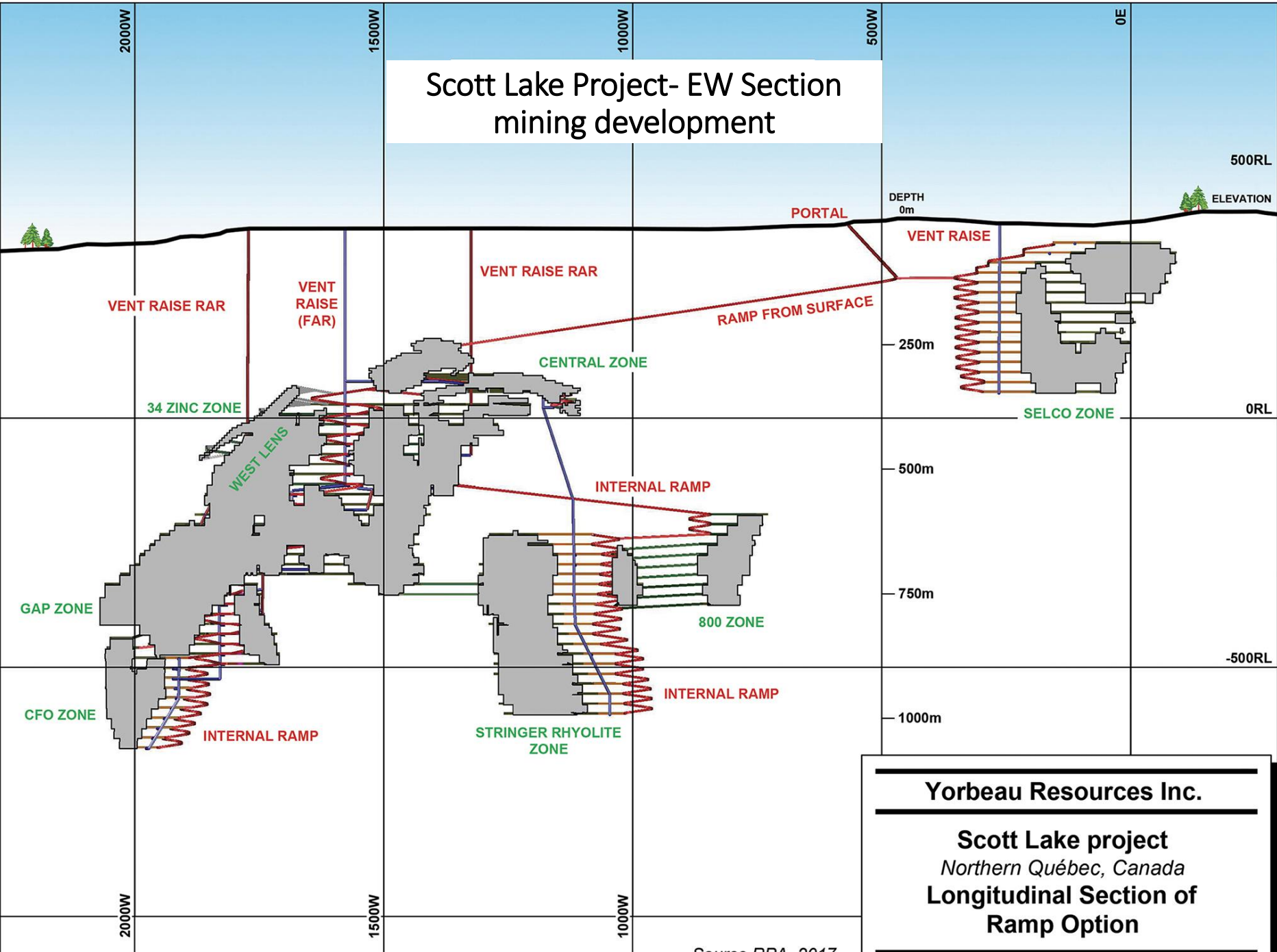
85% recovery in 25% Cu conc.



Zinc concentrate

87% recovery in 55% Zn conc.

Scott Lake Project- EW Section mining development

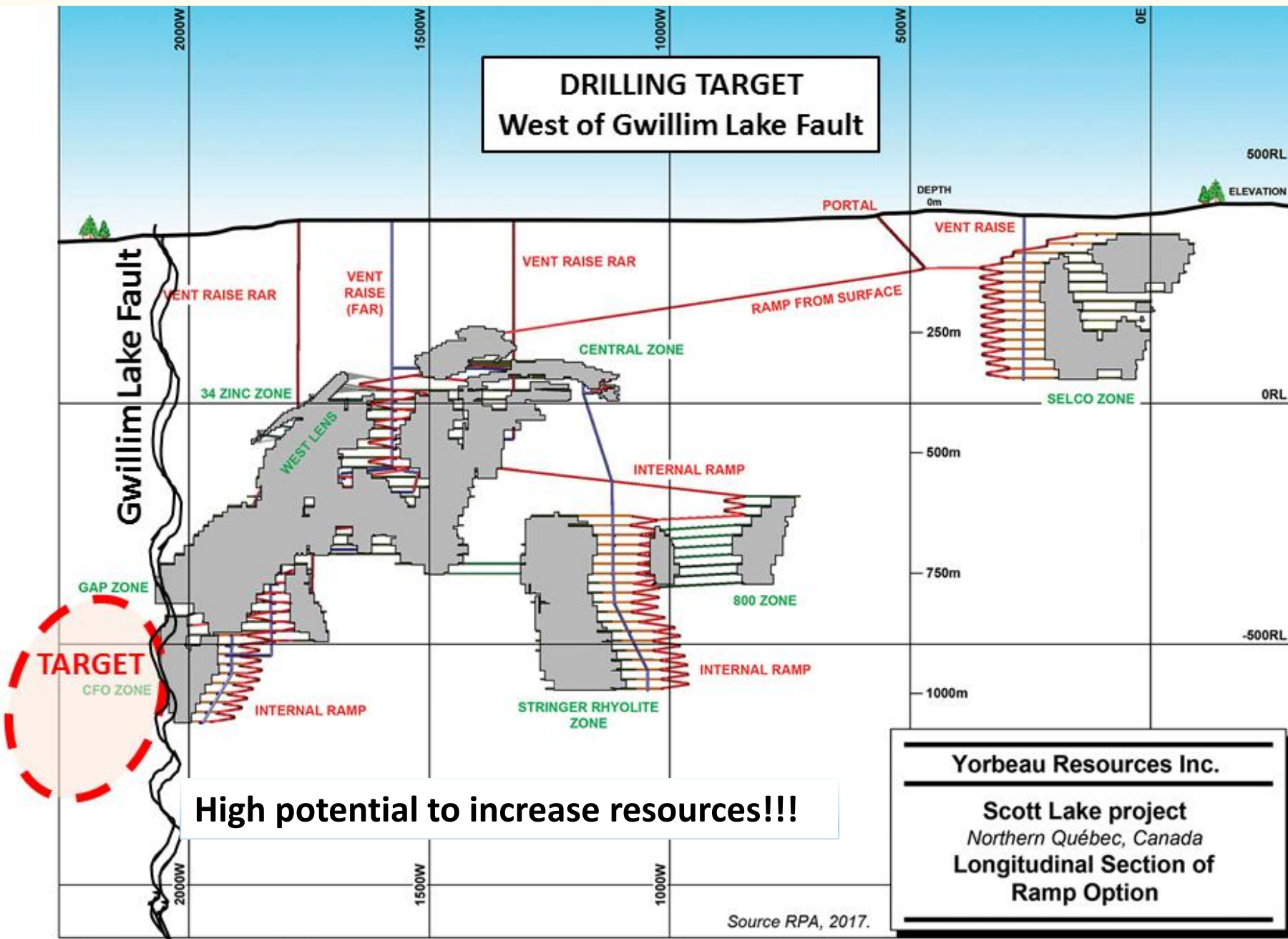


Yorbeau Resources Inc.

Scott Lake project
Northern Québec, Canada
**Longitudinal Section of
Ramp Option**

Source RPA, 2017.

DRILLING TARGET West of Gwillim Lake Fault



High potential to increase resources!!!

Yorbeau Resources Inc.
Scott Lake project
Northern Québec, Canada
Longitudinal Section of
Ramp Option

Étude Économique Préliminaire – Sommaire

Zn: \$US1.30/lb - Cu: \$US3.50/lb - \$C1.00=\$US0.80

Ventes Nettes (NSR)	• \$1.98 milliard
Flux de trésorerie	• Flux avant impôt de \$519.2 million
TRI	• TRI avant impôt de 16.5% avec période de recouvrement de 6 ans
Valeur Actuelle Nette	• VAN(8%) avant impôt de \$145.6 million
Coûts d'opération	• Coûts sur vie de mine ("LOM") de \$89.02/tonne usinée (incluent extraction, usinage, G&A et Environnement)
Capex	• Capital pré-production de \$215.47 million , • Immobilisations de maintien: \$113.2 million
Durée de vie mine	• production planifiée de 15 ans
Alimentation usine	• 12,024,000 tonnes à 0.8% Cu, 4.1% Zn, 26.6 g/t Ag et 0.24 g/t Au
Récupération usine	• Récupération moyenne (vie de mine): Zn: 87% , Cu: 85% ➤ Ag: 45% (dans concentré de cuivre) ➤ Au: 63% (dans concentré de cuivre)



Preliminary Economic Assessment - Details

Operating costs

	(\$/t milled)
Mining	54.14
Processing	27.49
General & Administration	7.40
TOTAL	89.02

Pre-production capital costs

	\$(millions)
Mining	52.58
Processing	60.00
Infrastructure	15.78
Tailings	4.65
Sub Total	133.01
EPCM*	46.55
Contingency	35.92
TOTAL	215.47

*EPCM: Engineering, Procurement, Construction, Management

Preliminary Economic Assessment - Details

Peak annual production

	Peak period	Average (per year)
Zinc concentrate	years 9-12	72,400 tonnes
Zinc metal (payable)		75 million pounds
Copper concentrate	years 5-8	28,467 tonnes
Copper metal (payable)		15 million pounds
Silver metal (payable)		395,835 ounces



Low cash cost zinc producer (net of by-products)

	millions	\$ Cdn	
pounds of payable zinc	810.9	\$/lb payable zinc	
mining	650.9	0.80 \$	
processing	330.5	0.41 \$	
G&A	85.6	0.11 \$	
Treatment (Zn conc.)	177.0	0.22 \$	
Transport (Zn conc.)	47.0	0.06 \$	
total operating	1,291.0	1.59 \$	
Cu credits	673.5	0.83 \$	
Ag credits	119.8	0.15 \$	
Au credits	88.8	0.11 \$	
net operating cost	408.9	0.50 \$	
sustaining Capital	116.2	0.14 \$	includes reclamation
Grand Total cash costs	525.2	0.64 \$	Cdn dollars; "all-in" costs

At \$C1.00 = US\$0.80: **US\$0.52**



Next steps* – Scott Project

* Subject to financing

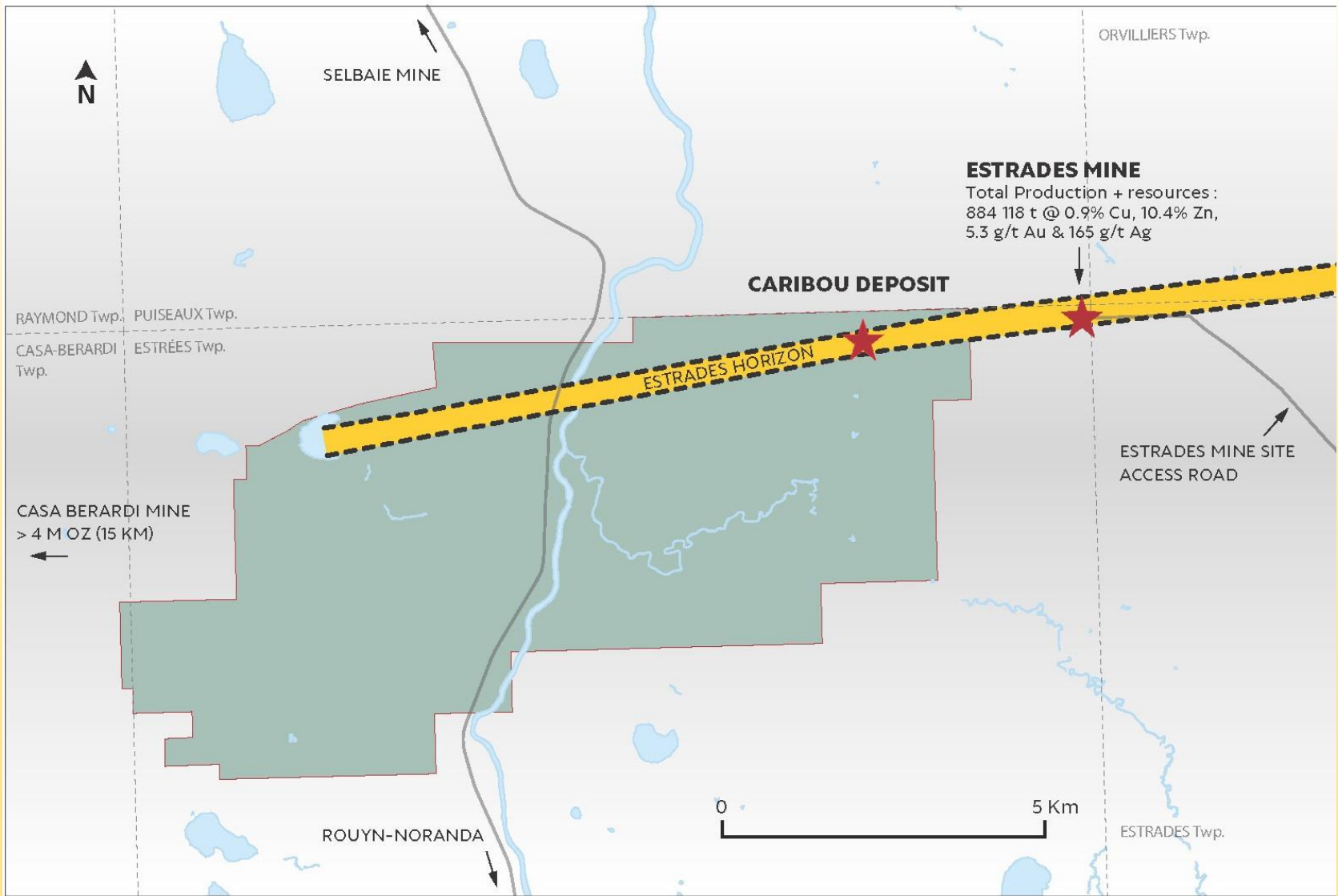
Phase 1: \$30 millions – Underground exploration

- Duration 24 months
- Excavation of ramp and drill stations (3,000 metres of developpement)
- 15,000 metres of underround drilling
- 4,400 metres of surface driling (including exploration west of Gwillim fault)
- Metallurcal testing (optimization)
- **Faisabilité study**

Phase 2: Construction

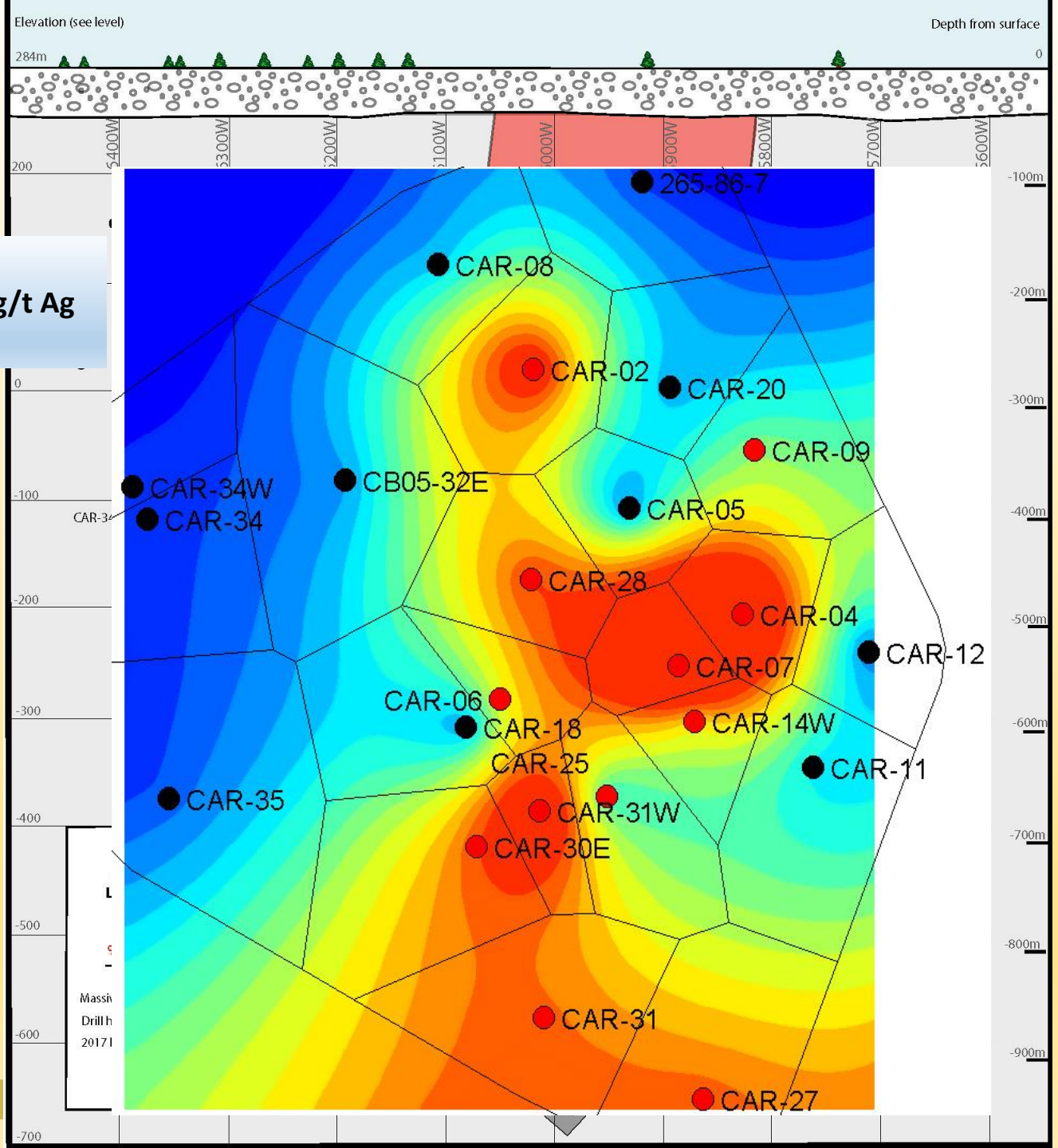
- Duration: 12 months
- production – first mine in Chibougamau camp since 2008

Estrades- Caribou



Caribou Project

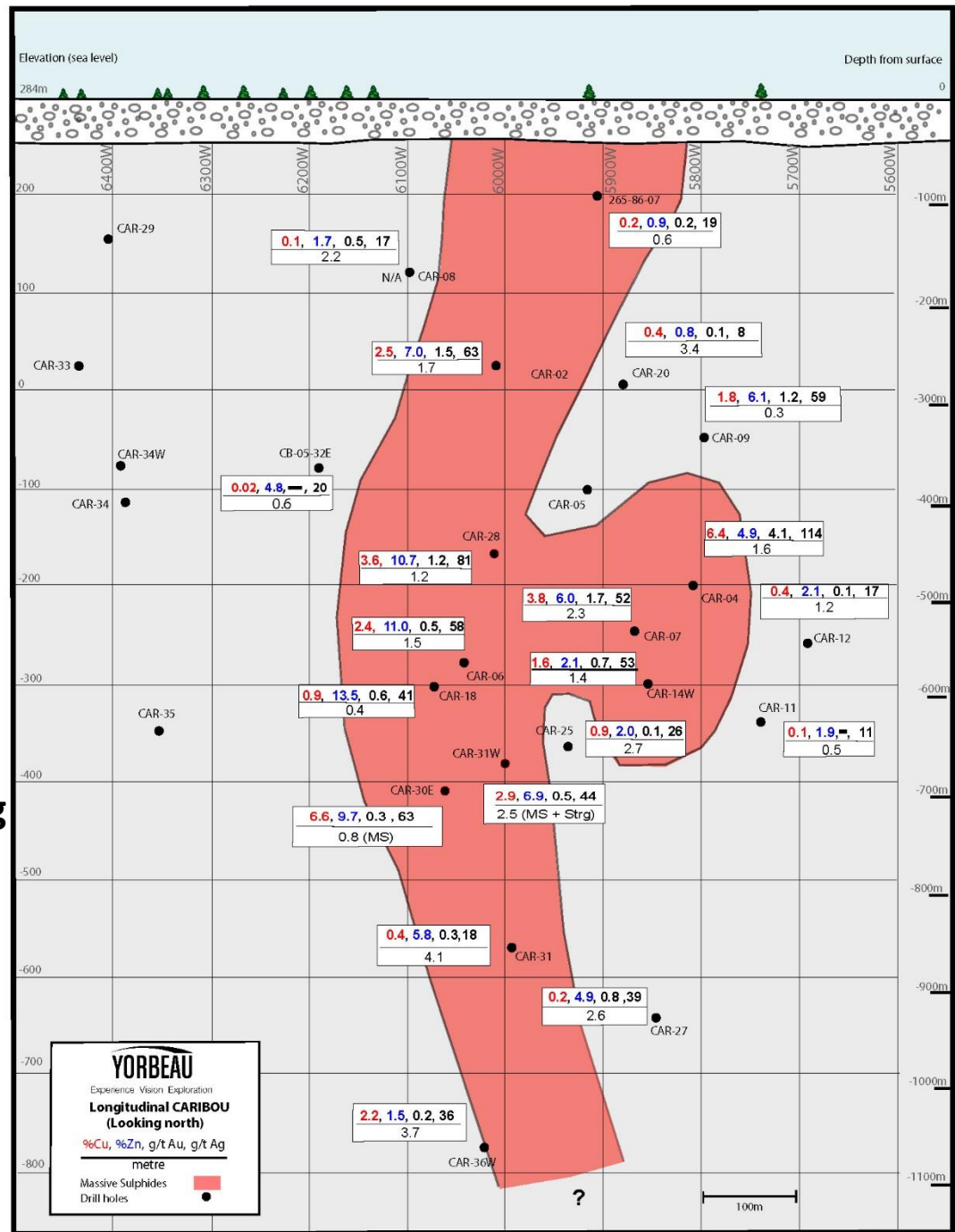
average 10 holes
2.8% Cu, 6.9% Zn, 1.1 g/t Au, 53 g/t Ag
over 1.8 m



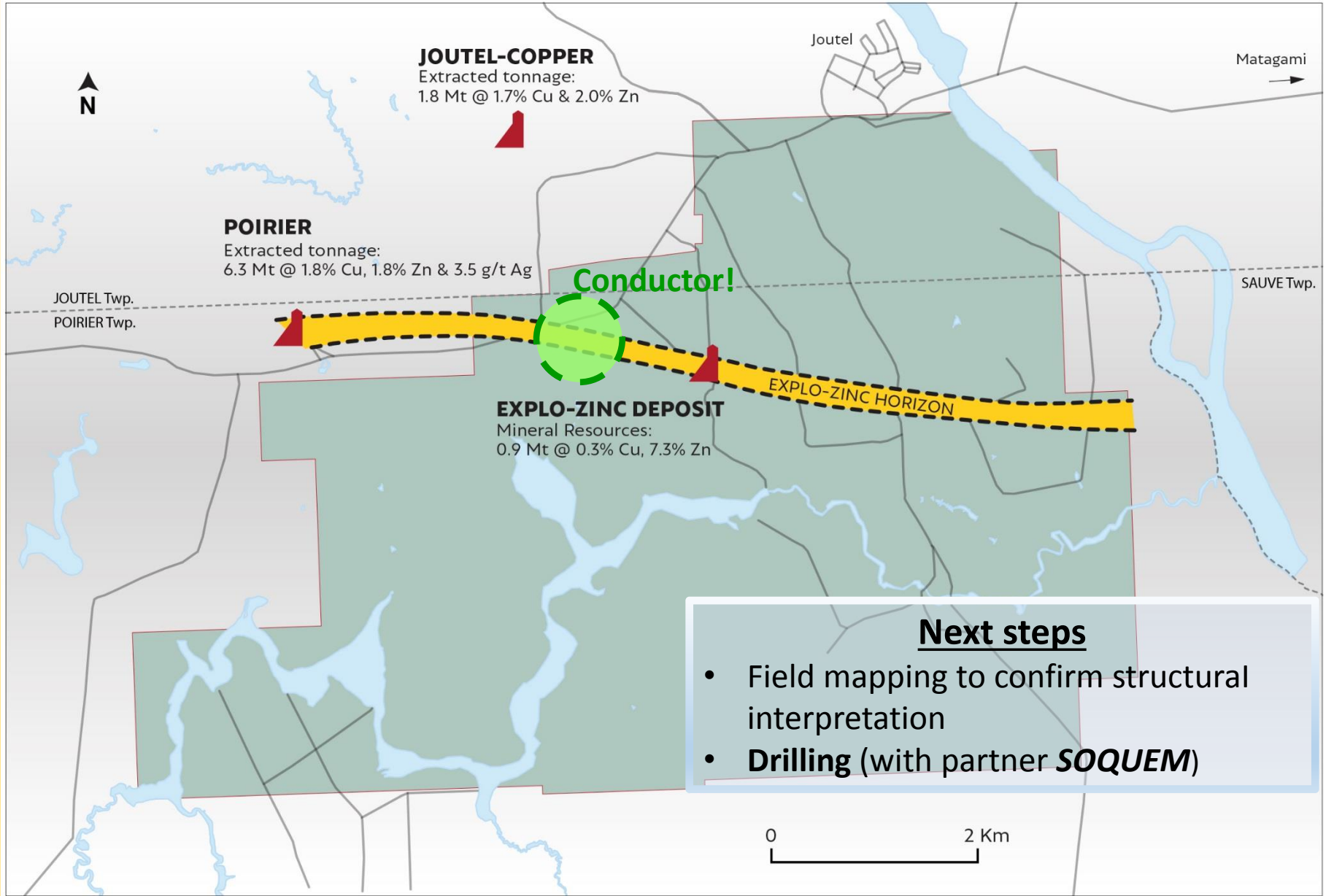
Caribou Project

Drilling program 2018

- One hole (CAR-36W)
- 3.7m @ 2.2% Cu, 1.5% Zn, 36 g/t Ag
- Conductor (borehole PEM) to the east



Joutel (Explo Zinc)

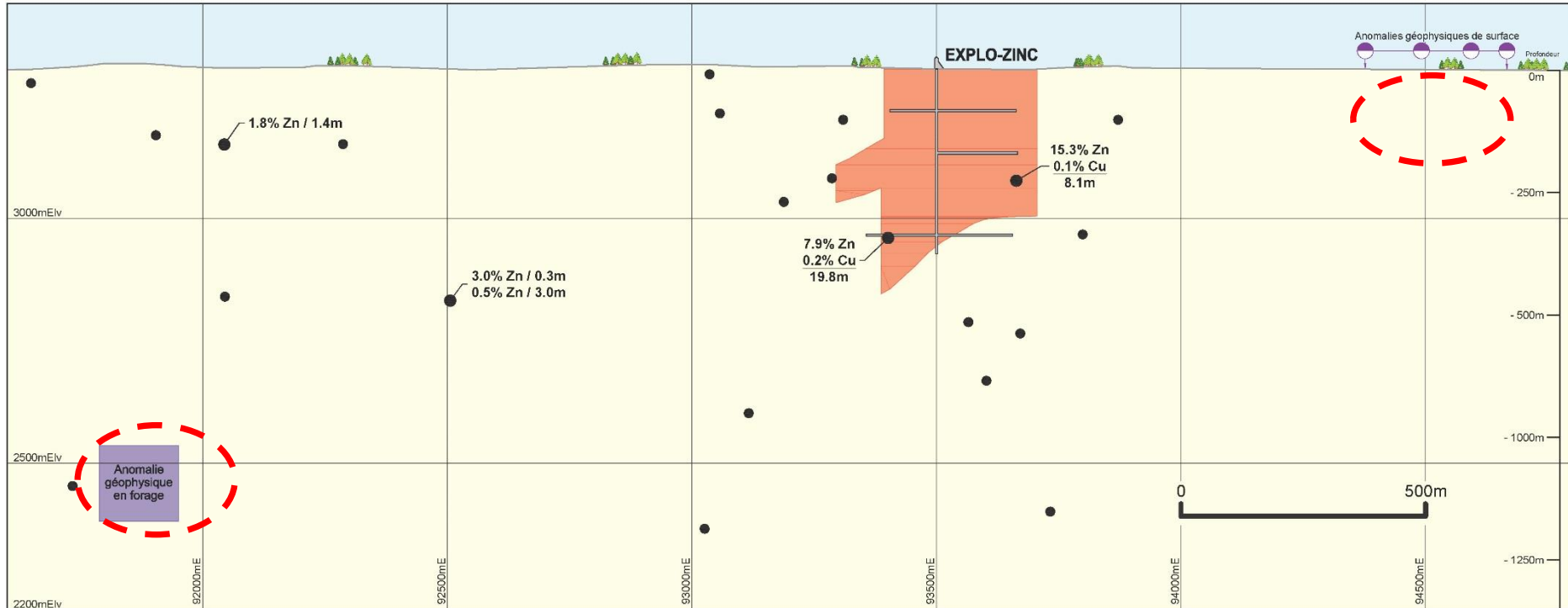


Next steps

- Field mapping to confirm structural interpretation
- **Drilling** (with partner **SOQUEM**)

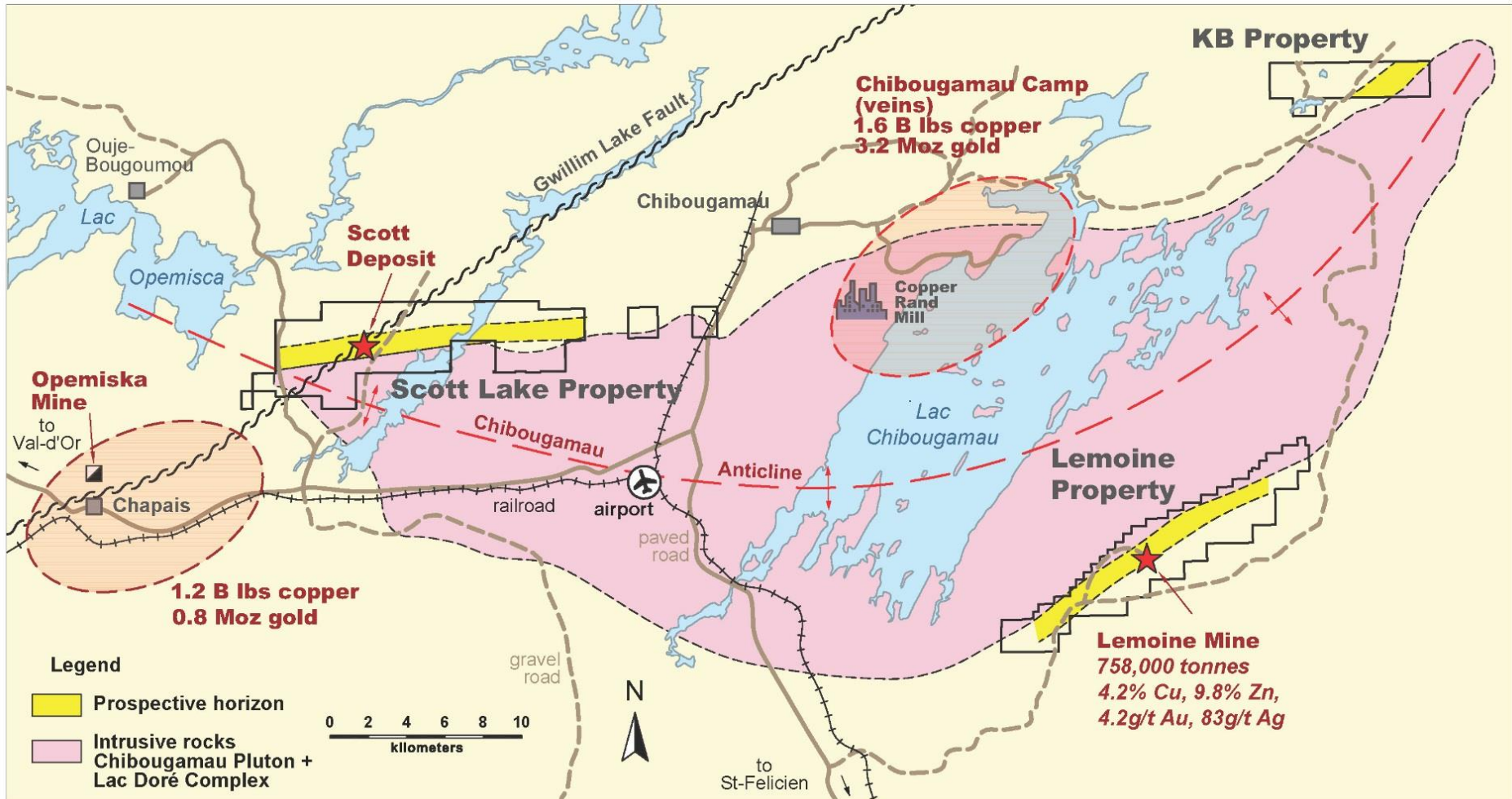
Drilling targets - Joutel

LONGITUDINALE HORIZON EXPLO-ZINC



category	tonnes	% Zinc	% Copper
indicated	587,961	7.6	0.35
inferred	273,485	6.6	0.21
Total	861,446	7.3	0.3

Projet KB



- Showing of zinc-copper-gold-silver
 - Average of 4 grab samples of massive sulphides :
1.4% Cu, 9.2% Zn, 56 g/t Ag and 2.2 g/t Au. (Incl. 8.25 g/t Au !)
- drilling (1965): **1.9% Cu** and **11.0% Zn** over 1.0 metre



Icon showing (mechanical stripping 2012): MSS lens exposed over a 25m length. Average thickness: 0,80m. Average grade: 1,44% copper, 8,12% zinc, 0,16% lead, 51 ppm Ag and 0,27 ppm Au.



KB Project

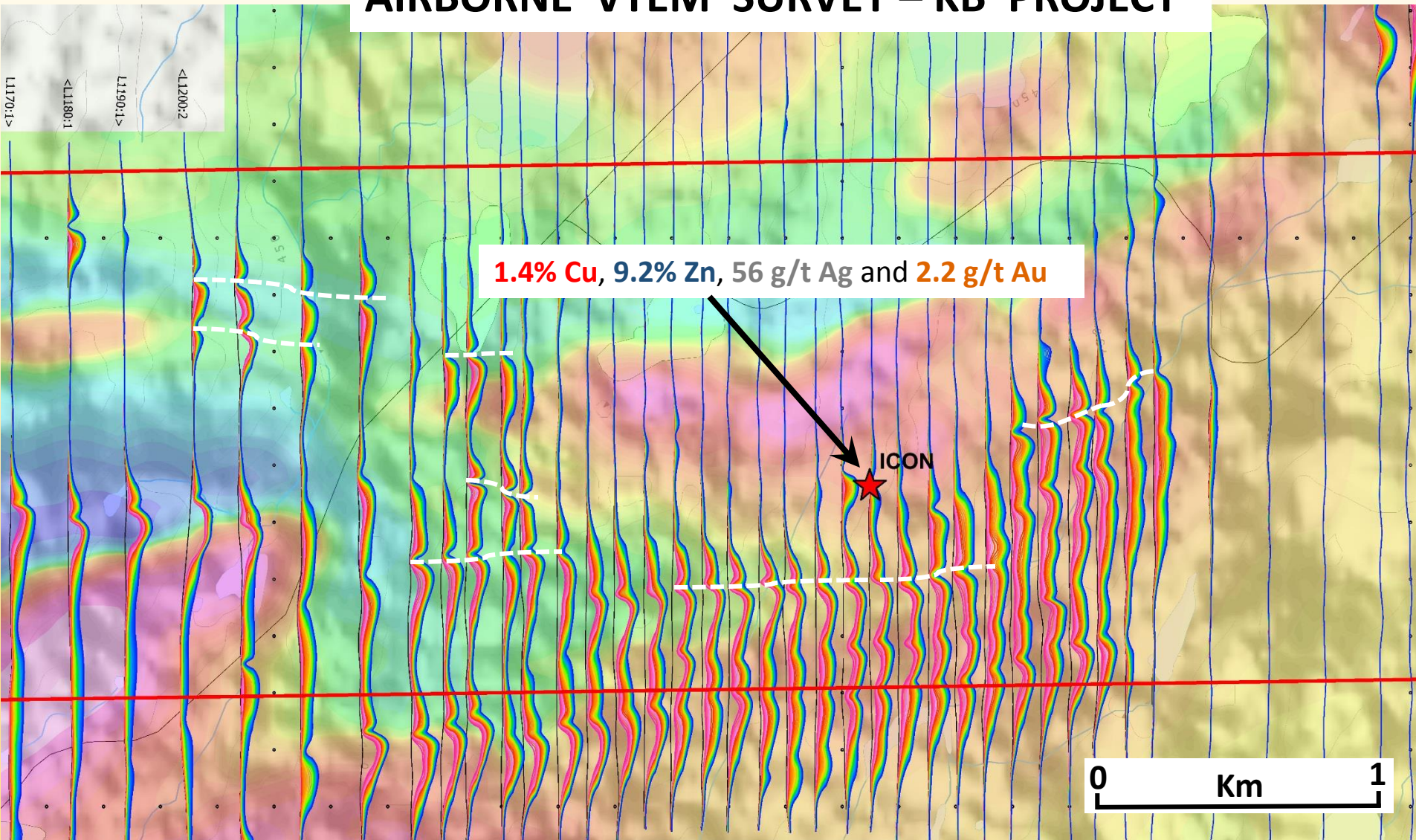
outcropping massive sulphides...

Airborne **VTEM** survey

- Completed
- Anomalies under evaluation



AIRBORNE VTEM SURVEY – KB PROJECT



What's next ?

- **Scott**
 - Marketing and unlocking value
 - Partnership?, spin-off?, etc.
 - Phase 1 – underground exploration and feasibility study
 - Phase 2 - construction
- **Rouyn:** Drilling to start in January 2019 with IAMGOLD
- **JOUTEL** (zinc): drilling in 2019 (partner with SOQUEM)
- **KB:** Diamond drilling to test conductors on strike with high grade showing

Steps to success!

Technical studies



production



Drilling and discovery

Merci!
Thank you!