



Experience Vision Exploration

**PRESS RELEASE
FOR IMMEDIATE RELEASE**

YORBEAU IDENTIFIES UNREPORTED MINERALIZATION IN HISTORICAL HOLES WITH ASSAYS UP TO 9.7 g/t Au OVER 6.0 METRES AT ROUYN PROPERTY.

Montréal, July 23, 2014 - Yorbeau Resources Inc. (TSX: YRB.A) (the “Company” or “Yorbeau”) is pleased to provide an update on the balance of the current 2014 exploration program at the Rouyn project.

As part of a modelling exercise, 5 historical holes from a 1995 drilling program on the Astoria block were selected for additional sampling. This exercise has resulted in both the identification of new mineralization and the expansion of known historical zones. In particular, a significant new interval assaying **9.7 g/t Au over 6.0 m** was identified in hole AS95-9037. This interval, which had not been sampled in 1995, has confirmed the current structural interpretation. The new mineralized intervals from the historic holes are shown below:

TABLE 1

Hole	From	To	Core length (m)	Au (g/t)
AS95-7025	49.0	55.0	6.0	1.6
AS95-9041	34.5	38.3	3.8	1.0
	51.8	53.8	2.0	2.3
	97.0	104.0	7.0	1.1
AS95-9040	57.1	67.3	10.2	0.9
AS95-9037	27.0	29.0	2.0	1.0
	63.9	95.5	31.6	2.5
Including	72.0	78.0	6.0	9.7
	84.0	86.0	2.0	4.5
AS95-7032	79.5	85.5	6.0	1.8

The following Table 2 summarizes the results of the sampling program, incorporating the new assays to the historical assayed intervals:

TABLE 2

Hole	2014 Assay Results				1995 Assay Results			
	From	To	Length	g/t Au	From	To	Length	g/t Au
AS95-7025	33.4	55.0	21.6	2.8	33.4	50.0	16.6	3.2
AS95-9041	33.0	46.8	13.8	30.0	41.3	46.3	6.5	60.1
	51.8	53.8	2.0	2.3	not sampled			
	97.0	104.0	7.0	1.1	not sampled			
AS95-9040	54.5	67.8	12.8	1.0	54.5	57.1	2.6	1.6
AS95-9037	27.0	29.0	2.0	1.0	not sampled			
	62.4	78.0	15.6	4.1	62.4	63.9	1.5	1.5
	Including							
	72.0	78.0	6.0	9.7	not sampled			
	84.0	86.0	2.0	4.5	not sampled			
	90.0	99.7	9.7	3.8	95.5	99.7	4.2	7.7
AS95-7032	71.7	85.5	13.8	1.7	71.7	79.5	7.8	1.5

True thickness is difficult to estimate as these historic holes were drilled from underground with highly variable orientations. However, the thickness typically represents 50 to 75% of core lengths.

The location of the drill holes is shown on the attached longitudinal section.

David Crevier, President and CEO commented “These latest findings combined with recent holes confirm that Astoria has significant untested potential. Hole AS-14-645 which intersected 9.1 g/t Au over 9.0 m (please see release dated July 8, 2014) opens up the deposit to the east and hole AS-14-636 which intersected 4.1 g Au/t over 5.0 m (please see release dated July 16, 2014) opens up the deposit at depth. Our more systematic approach continues to underscore the potential at the Rouyn Property. I look forward to updating shareholders as we position the Company to unlock the potential at the Rouyn Property.”

The qualified person under National Instrument 43-101 is Laurent Hallé, P.Geo., who has reviewed and approved the content of this release.

Samples were analyzed at ALS Chemex Laboratories in Sudbury, Ontario, by fire assay with atomic absorption and gravimetric finish. The sampling and assaying program was subjected to Yorbeau’s QA/QC program that includes inserting blanks and gold standards in batch samples being sent to the assay laboratory.

About Yorbeau Resources Inc.

The Company's 100% controlled Rouyn Property contains four known gold deposits in the 6-km-long Augmitto-Astoria corridor situated on the western half of the property. Two of the four deposits, Astoria and Augmitto, have substantial underground infrastructure and have been the focus of NI 43-101 technical reports that include resource estimates.

More information on the Company may be found on the Company's website at www.yorbeauresources.com. The raison d'être of Yorbeau is to identify a world class gold deposit in a major mining camp.

For further information, please contact:

Francois Perron
Vice President, Corporate Development
Yorbeau Resources Inc.
fperron@yorbeauresources.com
Tel: 416-312-4811

G. Bodnar Jr.
Director
Yorbeau Resources Inc.
gbodnar@yorbeauresources.com
Tel.: 514-384-2202
Toll free in North America: 1-855-384-2202

Renmark Financial Communications Inc.

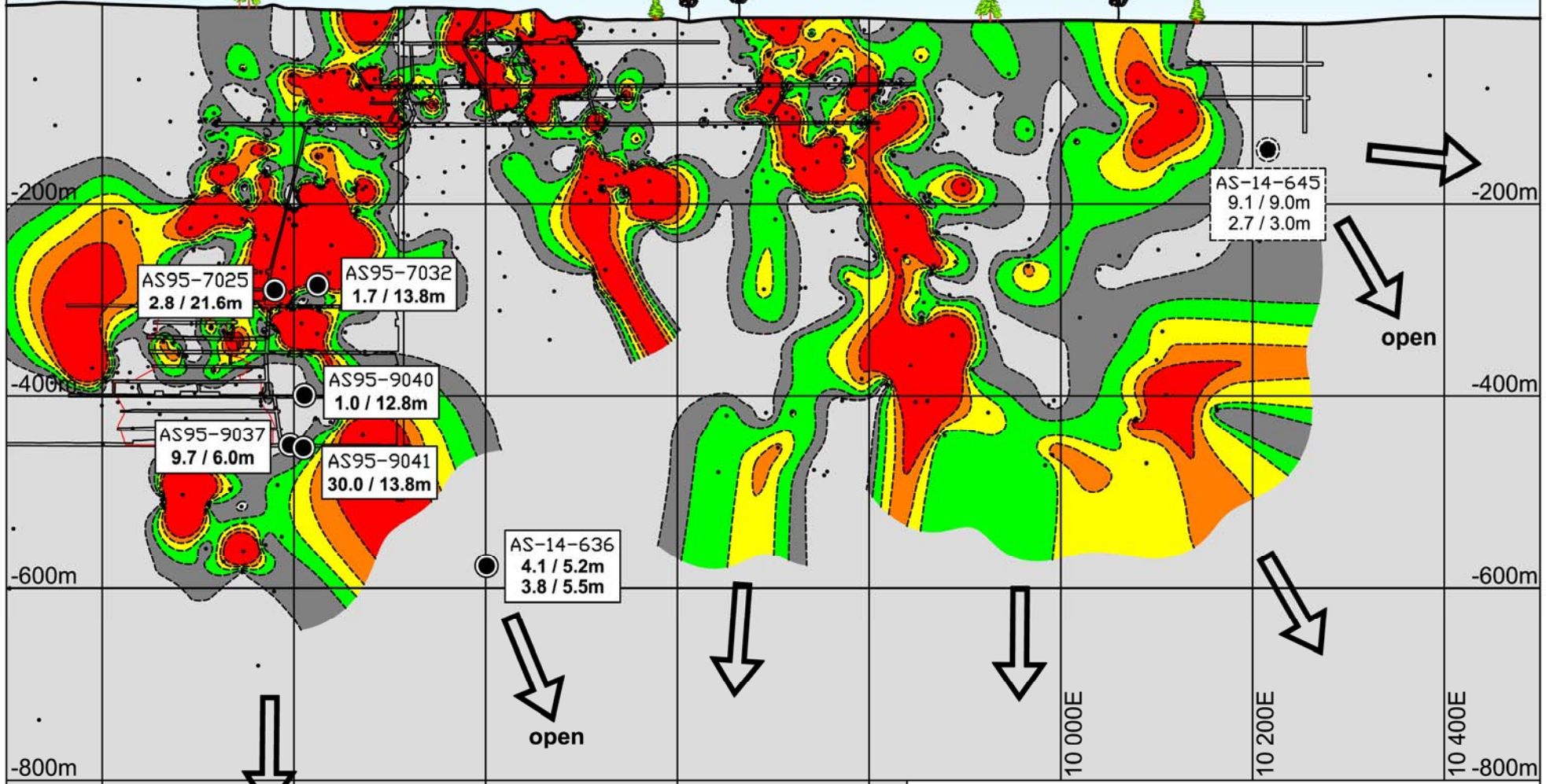
Laurence A. Lachance: llachance@renmarkfinancial.com
Farialle Pacha : fpacha@renmarkfinancial.com
Tel : (416) 644-2020 or (514) 939-3989
www.renmarkfinancial.com

***Forward-looking statements:** Except for statement of historical fact, all statements in this news release, without limitation, regarding new projects, acquisitions, future plans and objectives are forward-looking statements which involve risks and uncertainties. There can be no assurance that such statements will prove to be accurate; actual results and future events could differ materially from those anticipated in such statements.*

ASTORIA







West Shaft

East Shaft



Vertical longitudinal looking North
Legend

grade (g/t) X core length (m)

- | | | | |
|---|----------|---|------|
|  | > 10 |  | > 25 |
|  | > 5 |  | > 20 |
|  | tr. to 5 |  | > 15 |

