

Yorbeau Resources Inc. (TSX: YRB.A) is a gold exploration play with properties on the Cadillac-Larder Break region (2,775 km²) of the famed Abitibi Greenstone Belt of Quebec. Quebec is one of the most welcoming mining jurisdictions in the world. The Rouyn property, covering 12 km of the Break, is located a few km from the town of Rouyn. The town provides easy access to the labour pool and infrastructure of the Noranda mining camp. **Yorbeau has impressive assets in place and great exploration potential for gold in “flow ore” (sulfide-associated sediment hosted) and carbonate ore horizons.**

NEW CEO HAS 30 YEARS OF EXPLORATION EXPERIENCE

Dr. Thomas L. Robyn earned a geology degree from Western Michigan University, and a doctorate in igneous petrology/volcanology from the University of Oregon. He has over 30 years experience in mineral exploration planning and implementation, mineral property reviews and project management.

2008 Exploration Program



A geophysical IP/Resistivity survey along the entire 12 km length of the Break was completed and evaluated in April 2008.

- The objective of the survey was to identify drill targets along the 90% portion of the Cadillac-Larder Lake Break on the Company's Rouyn property that has never been explored in detail.

ASSETS IN PLACE

The infrastructure from \$45 million investment on the Augmitto Block by the previous owner (who went bankrupt in 1988).

Extensive surface and underground development on the Augmitto Block, with facilities that include maintenance buildings, a 1,142-metre exploration ramp, a 250-metre shaft and extensive drifting on several levels.

Extensive historical databases on both the Augmitto and Astoria deposits.

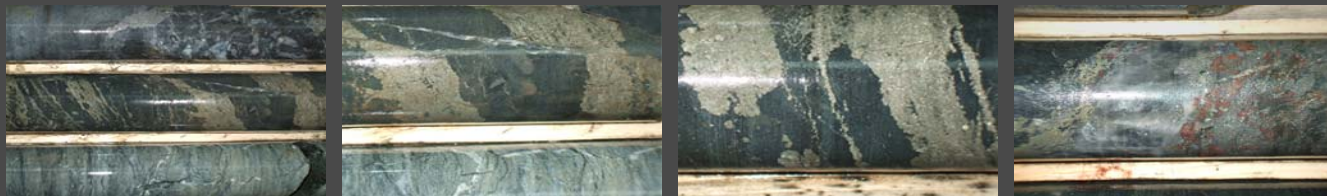
A 2005 NI 43-101 compliant resource estimate on the Astoria Block showing an undiluted resource of 349,100 ounces of gold.

The Astoria Block also has extensive underground workings including a 1,690 foot shaft and development drifts on several levels.

A \$3 million Exploration Program is underway with a minimum of 20,000m of NQ diamond drilling directed at testing geophysical and structural anomalies, infill and step-out drilling to follow high-grade gold zones laterally and down plunge. The drilling program started in June 2008 and has yielded the following results:

- Lake Gamble anomaly: Nine holes completed to date cut highly altered and silicified Piché formation, which is the target ultramafic formation on the Rouyn property and is the host rock for many gold deposits along the 275-km-long CLLB. Drilling of an additional 14 holes is underway.
- The alteration and silicification, together with visible gold observed in core, supports Yorbeau's exploration concept: that the 1,500 m long zone in the Lake Gamble and the Cinderella areas where the Piché host rock exhibits certain geophysical characteristics (magnetic low, resistivity high, chargeability high) are high-priority exploration drill targets.

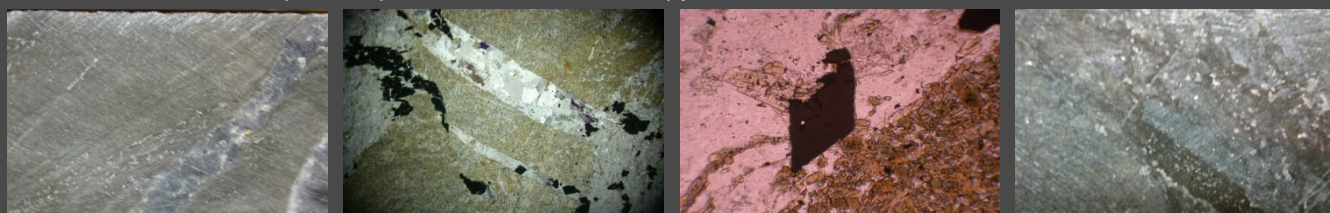
Flow ore (sulfide-associated) samples from Augmitto



Carbonate ore samples hosting visible gold



Samples of quartz-tourmaline-arsenopyrite veinlets in carbonate ore zones



MANAGEMENT AND BOARD

One of Yorbeau's strengths, complementing the potential of its properties, lies in the talent and experience of its officers and directors, who as a group are major shareholders in the Company. Yorbeau employs experienced engineers and geologists. Its Board of Directors is comprised of exploration professionals and financiers with profound knowledge of the natural resources business. Together, Yorbeau's people constitute a team that is expert in every aspect of gold exploration.

Name	Board of Directors	Management & Exploration Team
David Crevier	Chairman	Chairman
Thomas L. Robyn	Director	President and CEO
Georges Bodnar Jr.	Director	
Richard J. Renaud ¹	Director	
Philip Renaud ¹	Director	
Gérald Riverin	Director	
Louis Bernier	Director	Vice-President Exploration and COO
Claude Gagnier		Senior Geologist
Ercan Ugur		Chief Financial Officer
Valérie Miglia		Corporate Secretary
Denis Decharte		Junior Geological Engineer
David Gravel		Geological Technician

www.yorbeauresources.com

Symbol: YRB.A Exchange: TSX

Shares Outstanding: 129,979,250

Warrants outstanding: 4.3 million

Options outstanding: 5.2 million

Insider ownership: 33%

Year Hi-Lo: \$0.35 - \$0.15

INVESTOR RELATIONS

Nicole Blanchard

Managing Partner

Sun International Communications

T: 450.973.6600

nicole.blanchard@isuncomm.com

FORWARD-LOOKING STATEMENTS

Certain "forward-looking statements" contained in this fact sheet may involve a number of risks and uncertainties. There can be no assurance that these statements will prove to be correct, and actual results and future events could differ considerably from those implied by such statements.