

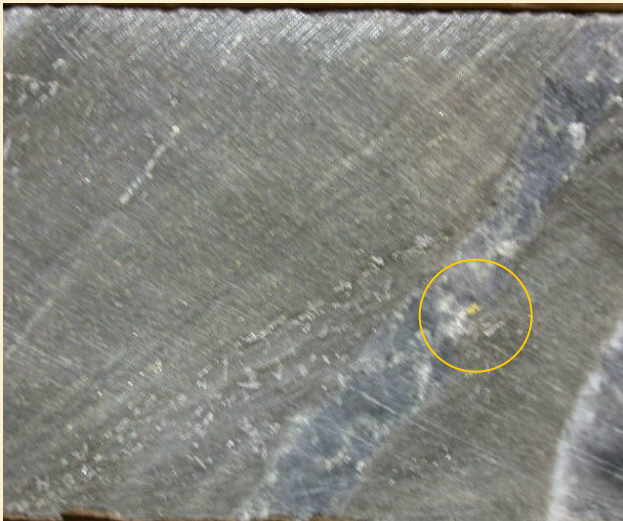
1-A



1-B



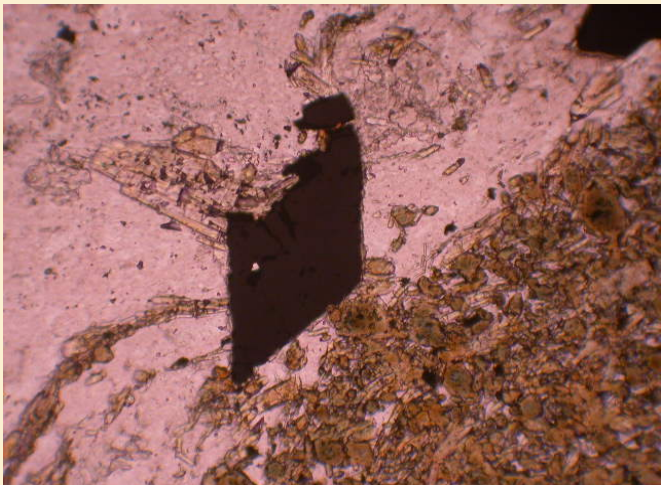
1. Disseminated arsenopyrite in quartz-albite-tourmaline (brown bands)-rich meta-sediment hosted mineralization from holes 406 and 411.



2. Closer view of photo 1-B above, showing visible gold (vg) in a quartz veinlet. The photo on the right shows disseminated grains of arsenopyrite (metallic white) near brown tourmaline bands.



3. View under the polarizing microscope of a tourmaline band (brown alteration) cut by late quartz-albite-carbonate veinlets. The opaque mineral is arsenopyrite, 100X.



4. View under the polarizing microscope of a lozenge section of arsenopyrite (opaque) near a tourmaline band (brown alteration), 200X. The photo on the right is the same under reflective light. The arsenopyrite shows a white metallic reflectance.